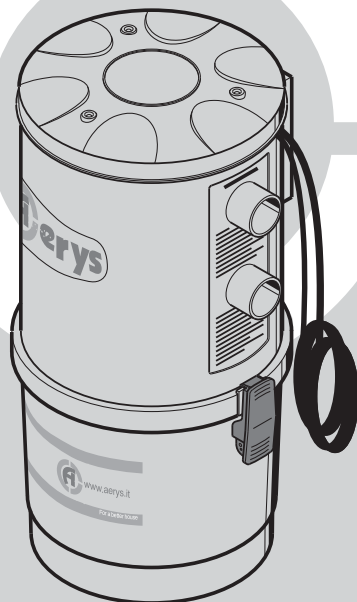


Guide for Installation,
Use and Maintenance



TECHNICAL MANUAL



INDEX

1	General Information	
1.1	- The user guide	2
1.2	- Safety and security precautions.....	2
1.3	- Identification plate	3
1.4	- Technical Service Provider	3
2	Unpacking	
2.1	- Handling and unpacking.....	4
2.2	- Control of the accessories.....	6
3	Description of the Central Suction Unit	
3.1	- Operating principles	7
3.2	- Allowed and improper use.....	8
3.3	- Compliance with the requirements and the relevant provisions of the EEC Directives in force.....	8
3.4	- Construction features	9
3.5	- Technical features	10
4	Installation	
4.1	- Place of installation.....	11
4.2	- Installation of the central suction unit	12
4.3	- How to connect the pipe network.....	13
4.4	- Electric system	14
5	How to use the central suction unit	
5.1	- Use of the suction unit.....	15
6	Maintenance	
6.1	- Programmed maintenance.....	16
6.2	- Unloading of the dust container.....	17
6.3	- Replacement of the filter cartridge	18
6.4	- Reconditioning of the filter cartridge.....	19
7	Servicing	
7.1	- Servicing criteria	19
8	Recommended Spare Parts	
8.1	- Spare parts list	20
9	Dismantling	
9.1	- General instructions.....	20
10	Technical Problems	
10.1	- Troubleshooting	21

1 - GENERAL INFORMATION

1.1 The User Guide

The user guide is a fundamental document written by the builder, to be considered an integral part of the central suction unit. In case of resale, offering or lease to third parties, the user guide must be handed over to the new user or to the new owner. The builder must be informed about any ownership change. We recommend storing and keeping the user guide throughout the whole operating life of the suction unit.

The main purpose of the user guide is to provide a correct knowledge of the user mode in order to exploit the best performance and to maintain the central suction unit at its best working and security conditions.

It is absolutely forbidden to duplicate, copy or release totally or part of this user guide without previous written authorization of the builder.

The builder reserves the right to improve or modify this guide or the suction unit at any time without previous notice.

1.2 Safety and security precautions

Read carefully any information written in this user guide regarding installation, use and maintenance of the central suction unit.

Never use inappropriately the central suction unit.

Never let the children get near the central suction unit when it is working and never let the children play with the suction inlets or with the suction unit.

Unplug the central suction unit when:

- The power supply cable is worn out or damaged
- The central suction unit has been exposed to the inclemency of the weather or to excessive moisture.
- The central suction unit has been damaged by an impact or the external container has been damaged
- The central suction unit requires any repairing or overhauling.

Always wear protection gloves and mask when carrying out any maintenance operation, and when unloading the dust container or replacing/cleaning the filter. Use only original spare parts.

Never use the suction unit to remove textile stuff, big-size bits and pieces of any material, burning coals or ashes.

Never use the suction unit to remove liquids

Use the suction unit only with the special filter cartridge correctly assembled.

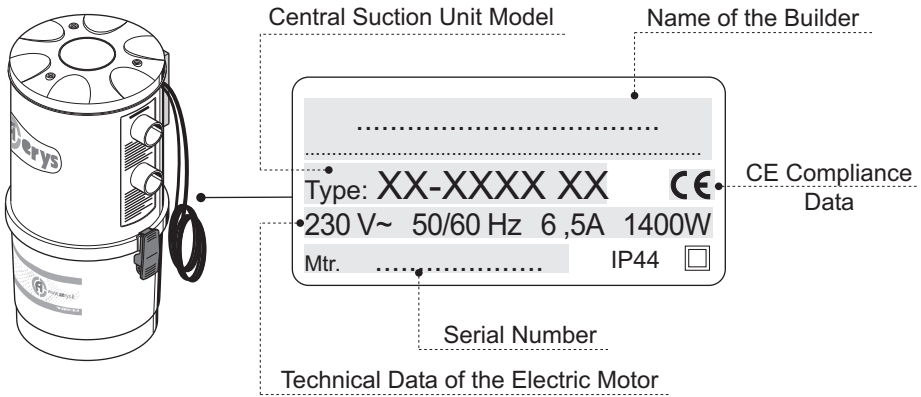
Never block the air exhaust pipes and the cooling inlets of the motor.

Never touch the suction accessories with any part of the body.

Use only one inlet at a time.

If you are not going to use the central suction unit for a short time, it is advisable to switch it off. If you are not going to use the central suction unit for an extended period of time, it is advisable to cut it off from the mains power supply.

1.3 Identification plate



1.4 Technical Service Provider

Call the Builder Technical Service or contact authorized centers for any information you may need. Always specify the technical data indicated on the identification plate and the serial number of the central suction unit.

Technical Service Provider
and After-Sales Service

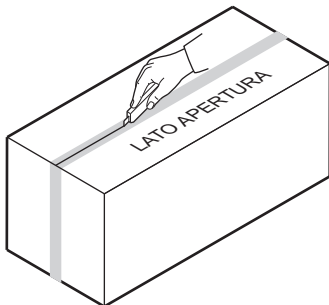
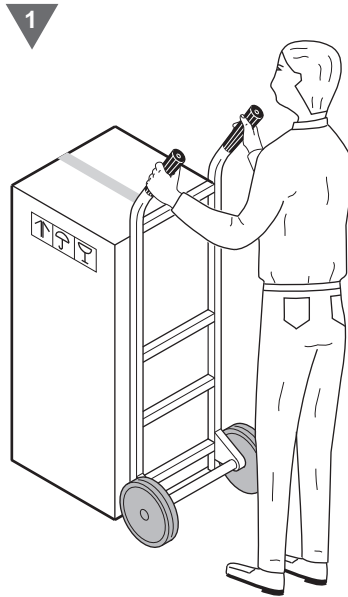
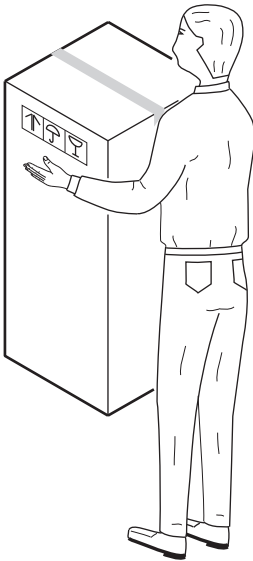
Authorized Technical
Assistance Center

2 - UNPACKING

2.1 Handling and unpacking

Follow the instructions printed on the cardboard box to move the suction unit to the location selected for the installation.

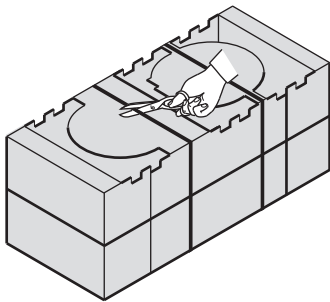
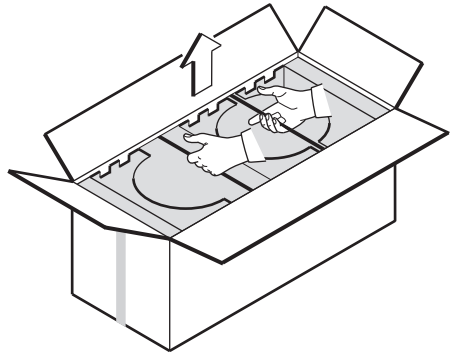
If necessary, use a trolley to move the suction unit or ask somebody to help you.



2 Arrange the cardboard box on the floor, with the opening side upward and cut the adhesive tape.

Open the box, take the straps with both hands and lift the suction unit. Arrange it on the floor in a horizontal position.

3

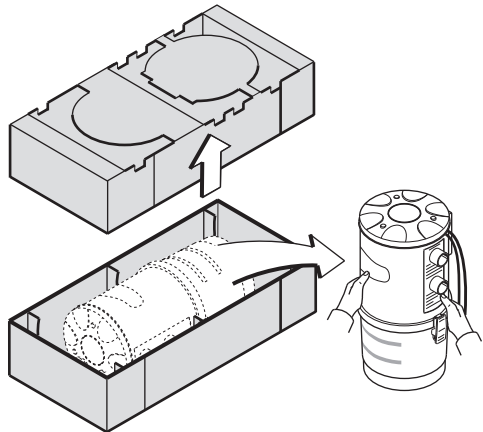


4

Cut the straps.

Remove the upper cardboard protection, lift the suction unit and arrange it on the floor in a vertical position. Remove the dust-protection bag.

5



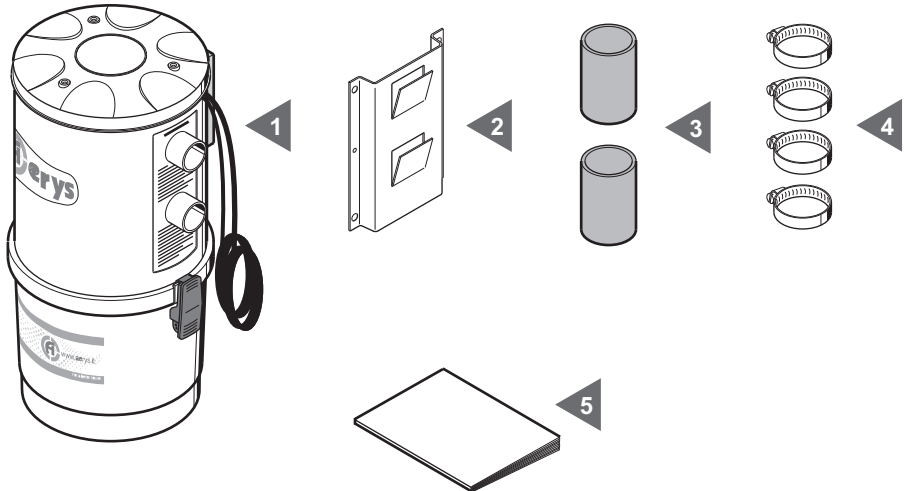
6

Take out all the accessories contained in the cardboard box and dispose in compliance with the relevant provisions in force.

2.2 Control of the accessories

Check what you have received:

- 1 - One central suction unit
- 2 - One metal frame for hanging the suction unit on the wall
- 3 - Two couplings made of plastic to connect the suction pipes
- 4 - Four metal clamps for fixing the couplings
- 5 - One user guide for correct installation, use and maintenance



Check that the suction unit and the relevant accessories correspond to what you have ordered.

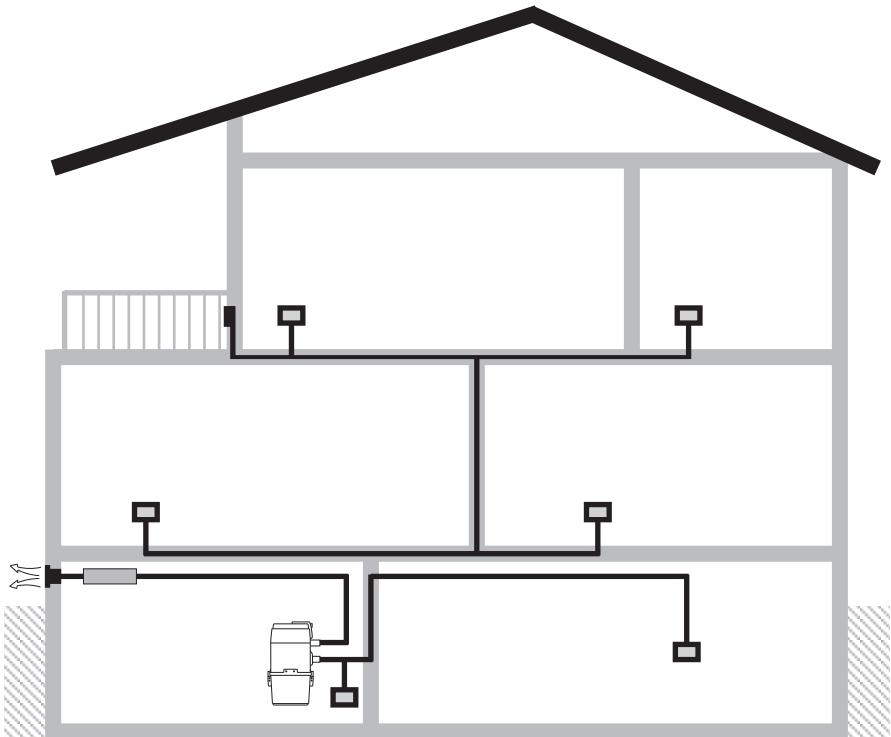
Make sure that the suction unit and the accessories have not been damaged during the handling. If this is the case, do not hesitate to contact the builder.

3 - DESCRIPTION OF THE CENTRAL SUCTION UNIT

3.1 Operating principles

The central suction system, suitable for any kind of residential building (house, office, hotels, service building) consists of a net of PVC pipes spreading out in every room and perfectly chased in walls and false ceilings. The suction pipe network is equipped with suction inlets where the user fits the suction hose. The central suction unit must be installed in a separated room (for example in a storage room, in a garage or in another service room) and is connected to the suction pipes network.

The user starts the suction unit by simply inserting the fitting of the suction hose into the suction pipe inlet.



3.2 Allowed and improper use

The central suction unit which are the object of this user guide, has been designed to remove the dust, small-size solid bits and pieces and dry materials. It is forbidden to use the suction system to remove textile stuff, big-size bits and pieces, burning and hot materials.

It is strictly forbidden to remove highly explosive materials (gun powder) or inert materials, which can trigger dangerous chemical reactions if removed separately and then mixed up in the dust container.

It is strictly forbidden to use the central suction unit in explosion hazard places or in places where temperature, pressure and moisture are out-of-range.

Any different use is strictly forbidden.

The builder, by means of written authorization, must approve any alteration or modification of the suction unit to remove a specific material.

Any use different from the original is to be considered improper and health risk for the user and damage to the suction unit cannot be excluded.



3.3 Compliance with the requirements and the relevant provisions of the EEC Directives in force

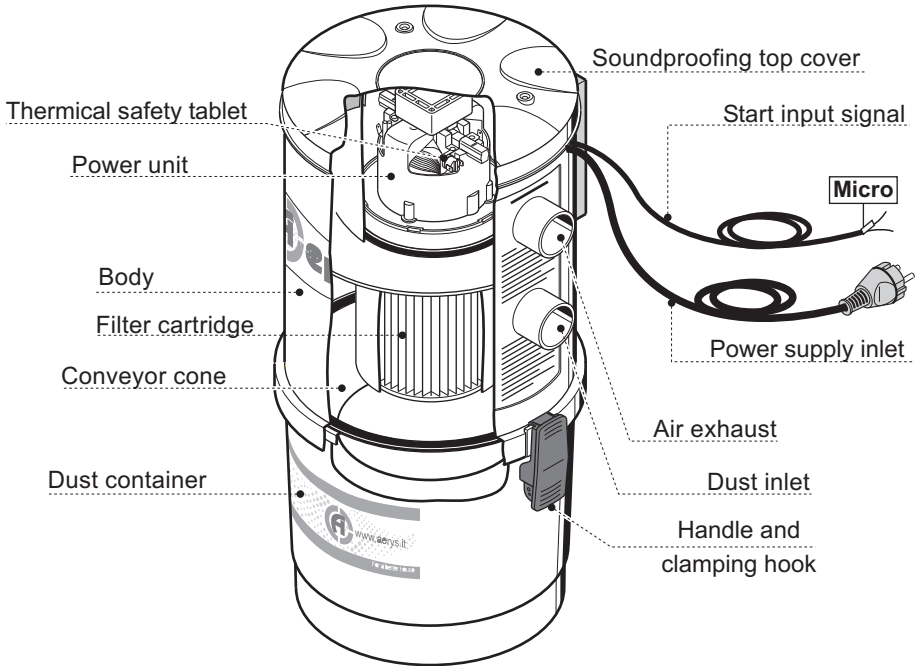
The suction units which are the object of this user guide, fully comply with the requirements and the relevant provisions of the EEC Directives detailed hereunder:

98/37/EEC - Machines Directive (ex 89/392/EEC) and following modifications

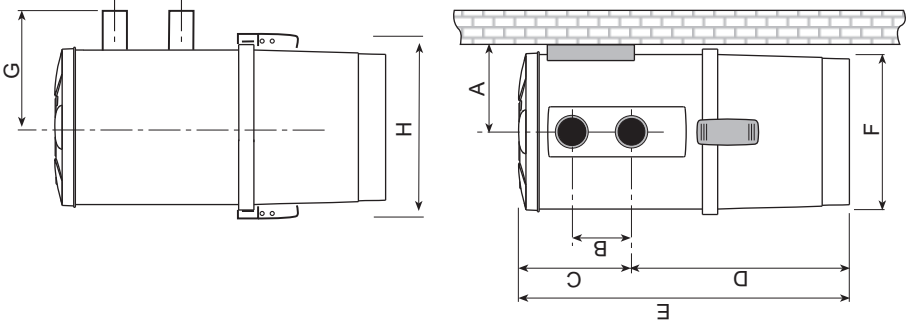
74/23/EEC - Low tension Directive (and following modifications)

89/336/EEC - Electromagnetic Compatibility Directive (and following modifications)

3.4 Construction features (see picture)



3.5 Technical features (See picture and table)



Technical features				
Suction fitting Ø mm	50			
IP Protection degree	44			
Power Supply Volt AC	230			
Frequency Hertz	50/60			
Power kW	1.4			
Absorption Ampere	6.5			
Inlet power supply Volt DC	12			
Max air volume m ³ /h	184			
Filtration surface cm ²	3100			
Dust container capacity lt	18			
Weight Kg	7			
Size A mm	160			
Size B mm	110			
Size C mm	210			
Size D mm	395			
Size E mm	605			
Size F mm	270			
Size G mm	175			
Size H mm	310			
Max. Noise Level				Never exceeds 70 dB (A)

English

4 - INSTALLATION



**- ATTENTION -
THE UNDERMENTIONED OPERATIONS MUST
BE CARRIED OUT BY QUALIFIED STAFF**



4.1 Place of installation

Before installing the central suction system, a suction pipes network must be installed by qualified staff. The qualified operators must also spot the best location to install the suction unit.

Suggestions for a correct installation are detailed hereinafter.

If the central suction system has to be installed in a multistorey building, the suction unit must be located at the lowest level of the building. The suction unit can be installed in a service room (for example in a garage or in a storage room), sheltered from atmospheric agents and protected from moisture and temperature changes. Choose a space far from heat sources (burners or radiators).

Leave free and well-lit space all around the suction unit to allow trouble-free maintenance and repair operations.

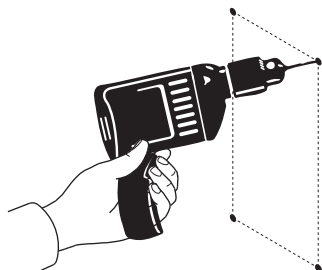
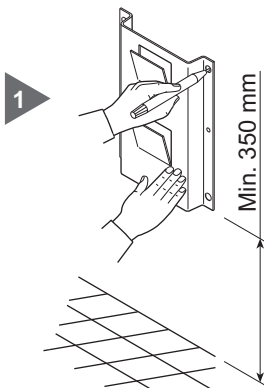
For any question do not hesitate to contact the Builder's Technical Assistance Service.

4.2 Installation of the central suction unit

You must use the special frame (provided with the suction unit) and the special screws to hang the central suction unit firmly and permanently to a wall. Remember that the suction unit must hold up the equivalent of eight times the weight of the suction unit (please refer to par. 3.5 table).

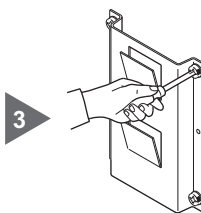
The operator must hang the suction unit at a suitable distance from the floor to allow an easy unloading of the dust container and a trouble-free replacement of the filter. Follow the instructions detailed herebelow to hang correctly the suction unit to the wall:

Position the special frame provided with the suction unit and lay out the reference points.
(if the drilling has already been carried out, go to step 3)

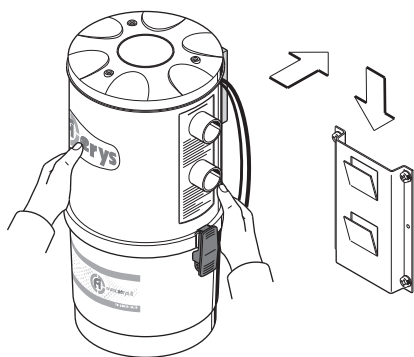


2 Drill the holes into the wall.

Arrange the frame on the wall.



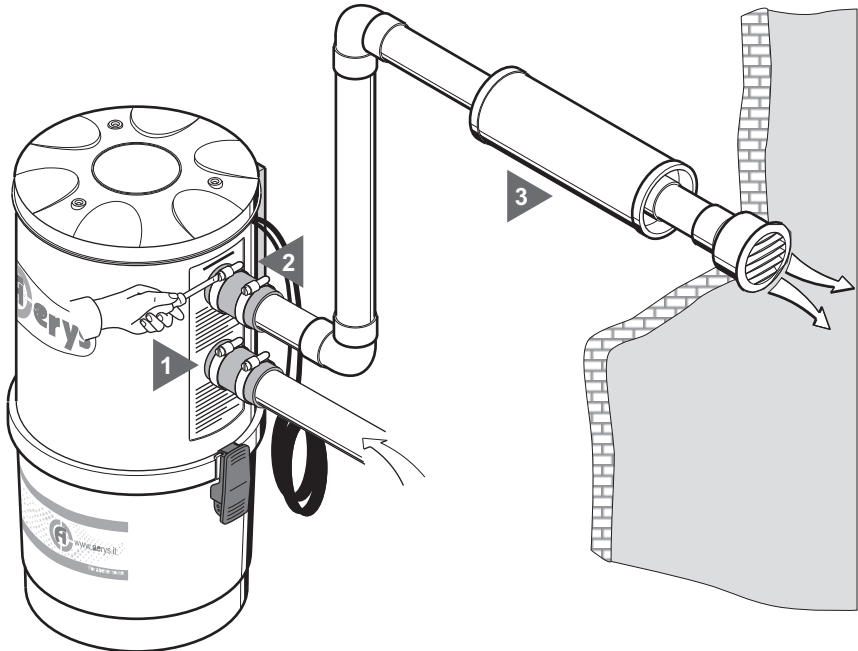
3



4 Hang the suction unit to the frame.

4.3 How to connect the pipe network (see picture)

- 1 - Use the correct fitting to connect the suction unit to the suction hose
- 2 - Use the correct fitting to connect the suction unit to the air exhaust pipe
- 3 - Stick the silencer on the exhaust pipe near the exhaust grid



4.4 Electrical connection

IMPORTANT ! = Always unplug the suction unit before carrying out any operation.

ATTENTION ! = The electrical connection must be carried out by duly qualified staff **ONLY**



Before plugging in the suction unit, make sure that the mains power supply corresponds to the central suction unit power supply (please refer to data indicated on the identification plate).

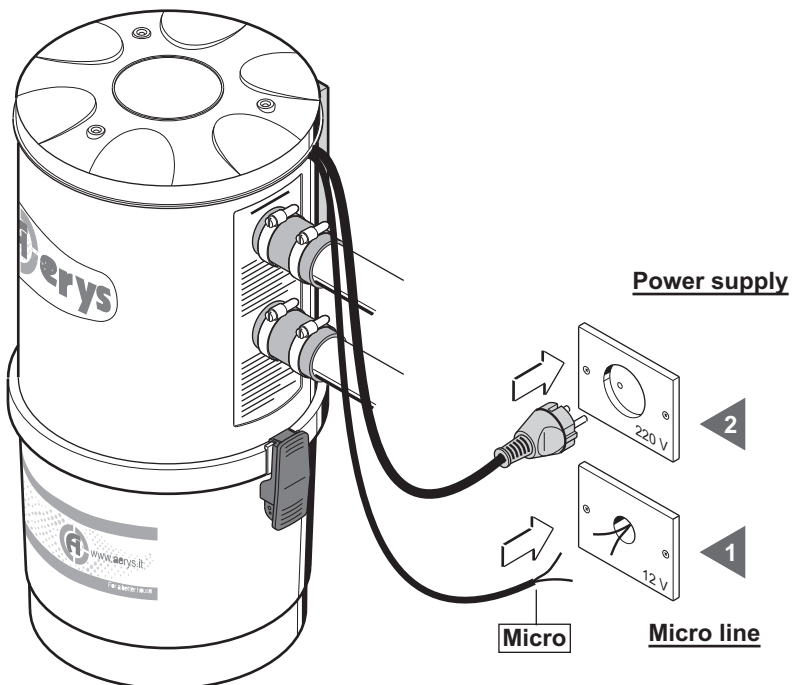
Connect the activation entry signal cable with low safety tension.

It is requested, during the unit installation, to foresee, at the bottom of the same unit, a protection bipolare switch.

The builder declines all responsibility for damages to persons or objects due to an electric system not in compliance with the regulations in force.

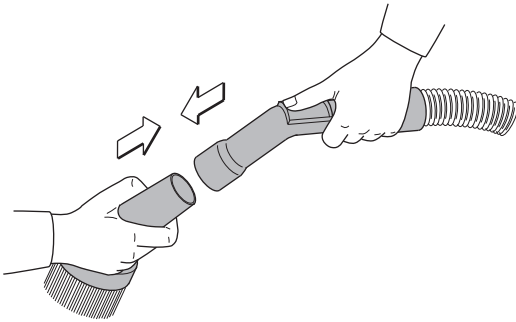
Follow the instructions to carry out this operation correctly (see picture)

- 1 - Connect the starting signal input cable (micro line).
- 2 - Insert the electrical plug into the appropriate power outlet.



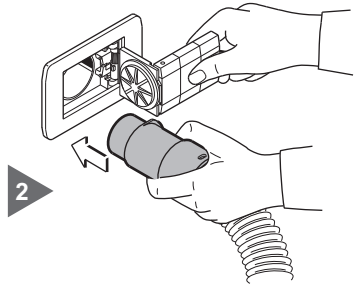
5 - HOW TO USE THE CENTRAL SUCTION UNIT

5.1 Use of the suction unit



- 1 Fit the accessory suitable for the cleaning operations you want to carry out in the hose.

Fit the opposite end of the hose in the suction inlet.
The suction system will start automatically.



After finishing the cleaning operations, remove the hose from the suction inlet and push gently the cover until it engages. The cover must be engaged gently to avoid any backstroke of the cover against the suction inlet; allow the suction unit a few minutes to stop.

6 - MAINTENANCE

- ATTENTION -

ALWAYS UNPLUG THE POWER SUPPLY CABLE FROM THE POWER SUPPLY SOCKET AND ALWAYS WEAR PROTECTION GLOVES AND GOGGLES BEFORE CARRYING OUT ANY TECHNICAL OR MAINTENANCE OPERATION



English

6.1 Programmed maintenance

In order to keep the system perfectly operating and to avoid any possible mechanic trouble, the user must overhaul the whole system at precise time intervals, according to the accumulated operating time of the central suction system (see table).

Time (Hours)	Type of intervention	Carried out by
4	Clean the filter cartridge	User
6	Unload the dust container	User
32	Replace the filter cartridge	User
54	Control the obstruction level of the air exhaust	Technical Service
400	Replace the electric motor carbons	Technical Service

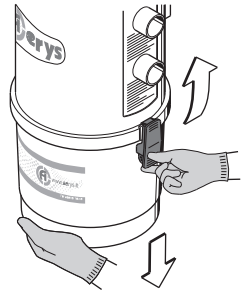
The casing of the suction unit needs periodically cleaning. Use a smooth and damp cloth with some neutral soap.

Attention: Be sure to use only water or water with neutral soap. Alcohol or other solvents may damage the unit. Wait until the unit is perfectly dry prior to start it.

6.2 Unloading of the dust container

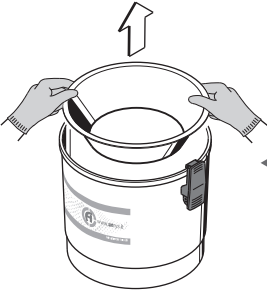
Disassemble the dust container.

1



2

Remove the conveyor cone.



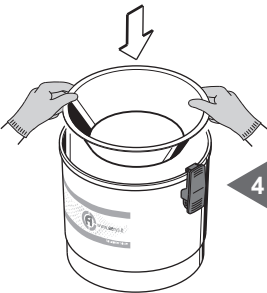
Unload the dust container.

3



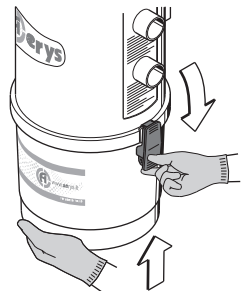
4

Assemble the conveyor cone.



Reassemble the dust container.

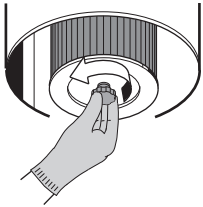
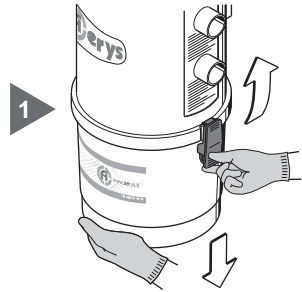
5



6.3 Replacement of the filter cartridge

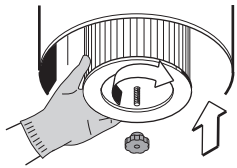
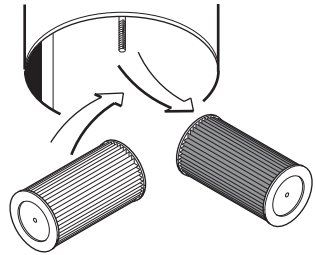
English

Disassemble the dust container. 1



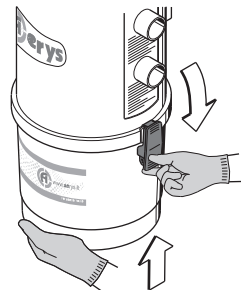
2 Unscrew the locking handle..

Replace the filter cartridge. 3



4 Screw the locking handle.

Reassemble the dust container. 5



6.4 Reconditioning of the filter cartridge

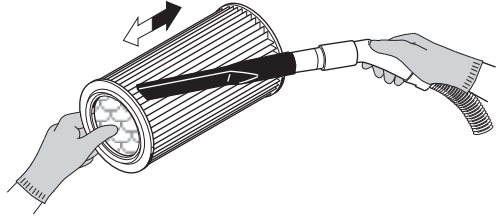
- ATTENTION -

NEVER USE THE SUCTION UNIT WITHOUT THE FILTER. BEFORE CARRYING OUT THE OPERATION DESCRIBED HEREUNDER, ALWAYS ASSEMBLE A NEW CARTRIDGE.

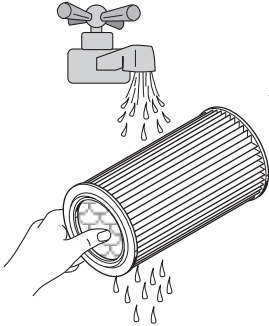


The filter cartridge can be reconditioned many times; use the corner nozzle of your suction unit to clean the filtering surface of the cartridge.

1



2



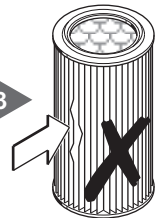
The filter cartridge can be washed with water

ATTENTION: before reassembling the filter make sure that it is completely dry



Check if the surface of the cartridge is torn; if this is the case, do not recondition the cartridge and do not use it again.

3



7 - SERVICING

7.1 Servicing criteria

It is strictly forbidden to operate on the central suction unit to carry out any maintenance or servicing not mentioned (and therefore not allowed) in the user manual.

Only qualified providers of the technical assistance service can carry out any maintenance or repair operations.

The guarantee will not apply in case of interventions carried out by non-authorized staff and the manufacturer cannot be considered responsible for possible injuries to persons and damages to things resulting from this kind of intervention.

8 - RECOMMENDED SPARE PARTS

8.1 Spare parts list

It is advisable to stock the spare parts more subject to wear. In order to grant the best performance of the central suction system, we suggest using only original spare parts.

Please find below a list of spare parts.

Description	Quantity	Spare Part Code	Central Suction Unit Model
Filter Cartridge	1	To read commercial brochure	

9 - DISMANTLING

9.1 General instructions

When dismantling the central suction system, dispose appropriately of used parts or material, which could endanger human health or well-being as well as the environment if handled improperly.

You must be acquainted with sites/companies authorized to collect and dispose of used parts and materials.

The disposal and/or recycling of any part of the suction system must be carried out in compliance with the legal regulations in force.

10 - TECHNICAL PROBLEMS

10.1 Troubleshooting

Problem	Possible causes	Possible corrective measures
No air suction in all air inlets	The power supply cable is unplugged	Plug in the power supply cable
	The start signal cable is unplugged	Plug in the start cable
	The thermal relay of the motor does not work	Leave the motor some minutes for cooling down
No air suction in only one inlet	The power supply contacts are cut off or the microswitch of the inlet does not work	Contact the technical service provider
Weak air suction	Several suction inlets are used simultaneously	Use only one suction inlet at a time
	The hose or the cleaning accessories are broken/damaged	Check if the hose is integral and if the fitting is correctly inserted
	The filter cartridge is dirty	Contact the technical service provider
	The fitting of the dust container is damaged or incorrectly positioned	Check if the fitting is integral and correctly assembled
	The pipes of the suction system are obstructed	Contact the technical service provider
	The air exhaust is obstructed	Contact the technical service provider
The suction unit does not stop when the suction inlets are closed	The microswitch of a single inlet does not work	Contact the technical service provider

